
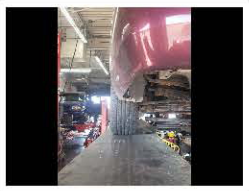
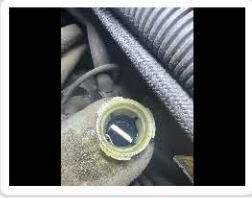



<b>Vehicle</b> 2007 Chevrolet Impala  Mileage In: 79431	<b>From</b> Carson, Jaymar Retail Sales Manager	Swanson, Nathan Chandler Tire Technician
------------------------------------------------------------------	-------------------------------------------------------	------------------------------------------------


<b>6 ITEMS HAVE SERVICE REQUIRED</b>	
<b>Dash warning lights</b>	<p><b>Observations:</b></p> <p><b>Finding:</b> Tire pressure light flashing  <b>Recommendation:</b> Needs 4 sensors</p> <p><b>Photos:</b></p> 
<b>Other findings</b>	<p><b>Observations:</b></p> <p><b>Finding:</b> Other  <b>Recommendation:</b> Noise coming from HVAC requires diagnostic</p>
<b>Alignment</b>	<p><b>Observations:</b></p> <p><b>Finding:</b> Visual  <b>Recommendation:</b> Perform wheel alignment</p> <p><b>Photos:</b></p> 
<b>Power steering fluid</b>	<p><b>Observations:</b></p> <p><b>Finding:</b> Check vehicle history  <b>Recommendation:</b> Fluid very dark</p>
<b>Brake fluid</b>	<p><b>Observations:</b></p> <p><b>Finding:</b> Due by mileage/time  <b>Recommendation:</b> Recommend change/flush</p> <p><b>Photos:</b></p>



Engine oil leak(s)	<b>Observations:</b>
	<b>Finding:</b> Engine oil leak(s) found
	<b>Recommendation:</b> Clean and monitor

**5 ITEMS HAVE SERVICE SUGGESTED**

Transmission fluid	<b>Observations:</b>
	<b>Finding:</b> Check vehicle history <b>Recommendation:</b> Recommend change/flush
	<b>Photos:</b> 

Battery	<b>Observations:</b> Rated CCA battery measurement: 685. Actual CCA battery measurement: 562.
	<b>Finding:</b> Marginal <b>Recommendation:</b> Charge/test battery
	<b>Photos:</b> 

Engine air filter(s) and minder	<b>Observations:</b>
	<b>Finding:</b> Engine air filter(s) dirty <b>Recommendation:</b> Other
	<b>Photos:</b> 

Front brake pads	<b>Observations:</b> Driver side front brake pads: 6. Passenger side front brake pads: 6.
	<b>Finding:</b> Front brake pads at service limit <b>Recommendation:</b> Replace front brake pads
	<b>Photos:</b>



### Rear brake pads/shoes

#### Observations:

Driver side rear brake pads/shoes: 6.  
Passenger side rear brake pads/shoes: 6.

**Finding:** Rear brake pads/shoes at service limit

**Recommendation:** Replace rear brake pads/shoes

#### Photos:



## 56 ITEMS ARE OK!

- ✓ Vehicle Images
- ✓ Oil change sticker
- ✓ Windshield wiper blade(s)
- ✓ Horn
- ✓ Other findings
  
- ✓ Front tire pressure  
Observations:  
Driver Side front pressure set to (psi): 36  
Passenger Side front pressure set to (psi): 36
  
- ✓ Rear tire size
  
  
- ✓ Other findings
- ✓ Headlights
- ✓ Front signal light
- ✓ Side marker light
- ✓ All rear lights functioning
- ✓ Third Brake Light
- ✓ Tail light
- ✓ License plate light
- ✓ Engine oil
- ✓ Drive belts
- ✓ Radiator, hoses/clamps
  
- ✓ Safety inspection/emission stickers
- ✓ Windshield
- ✓ Windshield washer system
- ✓ Road test findings
- ✓ Front tire tread wear  
Observations:  
Driver Side front tread depth (in 32nds): 7  
Passenger Side front tread depth (in 32nds): 7
- ✓ Other findings
- ✓ Rear tire tread wear  
Observations:  
Driver side rear tread depth (in 32nds): 8  
Passenger side rear tread depth (in 32nds): 8
- ✓ Rear tire pressure  
Observations:  
Driver side rear pressure set to (psi): 36  
Passenger side rear pressure set to (psi): 36
- ✓ All front headlights functioning
- ✓ Fog lights
- ✓ Front running light
- ✓ Other findings
- ✓ Brake light
- ✓ Rear signal light
- ✓ Back-up light
- ✓ Other findings
- ✓ Other findings
- ✓ Timing belt(s)
- ✓ Heater hoses/clamps

- ✓ Cabin/pollen air filter(s)
- ✓ Spark plugs
- ✓ Front brake rotors
- ✓ Steering components
- ✓ Front joints and linkages
- ✓ Front CV drive axle
- ✓ Rear joints and linkages
- ✓ Rear springs
- ✓ Catalytic converter(s)
- ✓ Muffler
- ✓ PCV valve
- ✓ Other findings
- ✓ Rear brake rotors
- ✓ Front suspension components
- ✓ Front struts
- ✓ Rear sway links/bushings
- ✓ Rear shocks
- ✓ Exhaust manifold(s)
- ✓ Exhaust pipes